

POCKET MIRACLE

Light Therapy Device

USER'S GUIDE

Low level laser therapy device for addressing thinning hair, pain, accelerates healing of wound, and helps with skin revitalization.

OPERATING INSTRUCTIONS HAIR LOSS TREATMENT

Treatment Sessions

Use daily for the first 3 months. There is no need to use more than once daily if a session is missed. Subsequently, 2 to 3 sessions per week is advised for maintenance.

Using it

1. Press the cover release button (f), hold it and slide open the back cover (e), and insert a 1.5V AA battery. Slide the cover back in until it snaps in place.

2. Press the button (a) to switch on the unit. A single beep will sound.

3. Brush the comb through the scalp. During this period, the unit beeps every 5 seconds. See "Scanning Method" below.

To mute this feature, press button (a) for 2 seconds. A beep will indicate confirmation of the action. Do likewise, to select this feature again (When the unit is switched on again the next time, the last option selected is featured).

4. After 15 minutes, the unit will beep three times, indicating the end of a session and then switches off automatically. The unit may be switched off at mid-session by pressing button (a) and may be switched on again at anytime.

Scanning Method

1. Scan the scalp in a systematic manner so as to obtain the appropriate dose on the desired areas, giving particular emphasis on the most affected areas. The method below will provide proper coverage and dosage for hair rejuvenation.

2. Scan the scalp by moving the laser comb 5mm in the X direction after each beep.

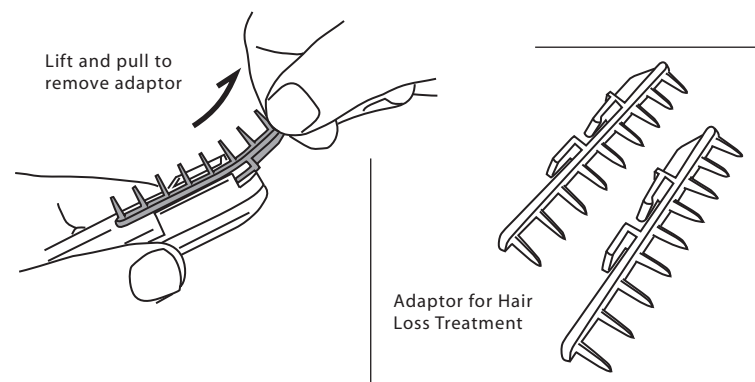
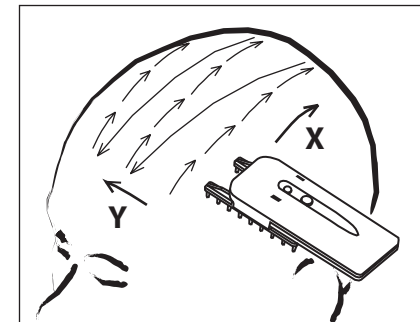
3. When you have finished scanning in the X direction, move the laser comb to the next spot, about 20mm away in the Y direction and repeat the process until you have completely covered the desired area.

4. Repeat scanning the same area at least one more time. Scan areas with the most severe hair loss more frequently, but not more than six times in one session. For effectiveness, keeping within the dosage window is important in low level laser therapy.

5. After 15 minutes, the unit will beep 3 times and then switches off automatically. This time is usually sufficient for treatment, but if more time is required, just switch the unit on again.

6. Use daily for the first 3 months. There is no need to use more than once daily if a session is missed. Subsequently, 2 to 3 sessions per week is advised for maintenance.

7. This device may be used with other forms of medically recognized hair treatment.



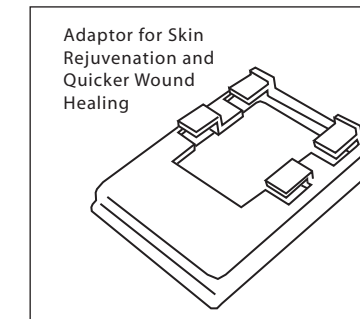
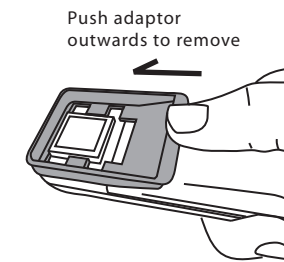
OPERATING INSTRUCTIONS SKIN REJUVENATION

Application

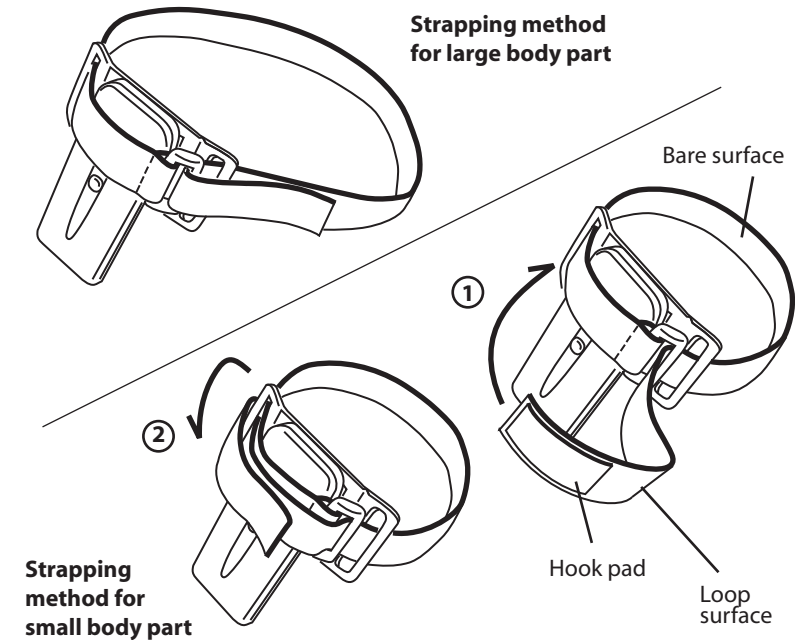
Skin tissues have the ability to absorb light energy to stimulate cellular activity. Vielight skin rejuvenation therapy applies light at a precise wavelength to rejuvenate skin cell. The action stimulates a series of activities in the cellular structure that promote the production of collagen and elastin, resulting in firmer skin and reduced fine wrinkle lines. The result is skin that appears firmer, smoother, and more radiant.

Directions

For the face, use daily. The device is auto timed for 15 minutes. Enhances effectiveness of skin care products.



STRAPPING UP



OPERATING INSTRUCTIONS QUICKER WOUND HEALING

Application

Light therapy methods similar to this by Vielight have been used worldwide for decades demonstrating its effectiveness to accelerate wound healing at the directed areas of the body. It stimulates a set of cellular level interactions that reduces acute inflammation and achieving the above mentioned outcomes. Damaged tissues are found to be particularly responsive to this stimulation.

Directions

Place the light source over the affected area. The device is auto-timed for 15 minutes per session but continue the treatment for a second consecutive session covering 30 minutes. Apply this treatment at least once a day until the wound is healed sufficiently. If the treatment is to be applied more than once a day, allow an interval of at least 6 hours.

Care & Cleaning

1. Use a soft, dry cloth to clean surfaces. Do not use abrasive cleaners. Do not submerge the device in water. The comb adaptors (c) are detachable by sliding them outwards for cleaning.
2. Store the equipment in a dry location, free from dust, away from direct sunlight. The storage temperature should be within 10oC to 40oC.

Replacing the Battery

1. The battery health indicator (b) will flash during operations when the battery has sufficient charge to keep the laser output regulated. Otherwise, the unit will beep 5 times and switches off. Insert new batteries when this happens.

Note: Remove the battery if the equipment is not likely to be used for some time.
2. To access the battery compartment, press the cover release button, hold it down and slide open the back cover. When inserting new batteries, make sure that the poles are in the right direction.

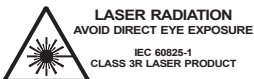
Disposal

To protect the environment, dispose of used batteries at appropriate collection sites according to national or local regulations.

Plastic parts are resistant to biodegradation and should be recycled according to the material as identified on the parts.

Technical Specification

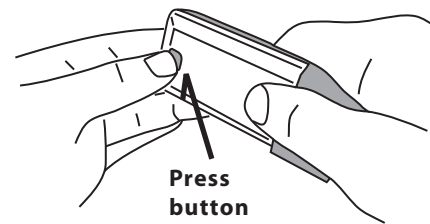
Light Source: Laser diode 655nm
Power: 5 mW regulated, pulsed
Auto Timer: 15 minutes
Indicators: Power ON, Beeper on/off, Intermittent beeper, End of session, Battery health, Battery low
Battery Type: 1.5V AA
Battery Life: 20 hours with alkaline battery



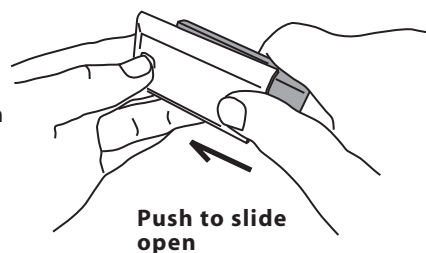
Product of Vielight Inc., Canada

REMOVING THE BATTERY COVER

1 Hold the casing as illustrated, and press the cover release button.



2 While holding down the release button, push to slide open the cover.



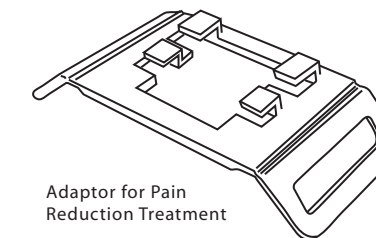
OPERATING INSTRUCTIONS PAIN REDUCTION

Application

Light therapy methods similar to this by Vielight device have been used worldwide for decades demonstrating its effectiveness to reduce pain at the directed areas of the body. It stimulates a set of cellular level interactions that reduces acute inflammation and achieving the above mentioned outcomes.

Directions

Place the light source over the affected area. The device is auto-timed for 15 minutes per session but continue the treatment for a second consecutive session covering 30 minutes in total. Apply this treatment at least once a day until the pain has subsided. If the treatment is to be applied more than once a day, allow an interval of at least 6 hours.



Limited One-Year Warranty

Your Pocket Miracle is warranted to be free of defect in material and workmanship under normal use.

This warranty is limited for a period of one year from its original purchase date in which repairs or exchange of parts according to what is deemed necessary by the company will be made free of charge.

This warranty does not cover damage by the following;

- Misuse, abuse or alteration to the product
- Damage caused by accident or neglect
- Servicing or repairs made by unauthorized persons

WE SHALL NOT BE RESPONSIBLE FOR ANY INCIDENTAL, SPECIAL, OR CONSEQUENTIAL DAMAGES RESULTING FROM THE USE OF THIS PRODUCT.

